

# Nexus<sup>®</sup> 50 Recycling Bin System

User case studies are available  
www.bins4recycling.com

The sleek, contemporary design of the Nexus 50 units will complement any environment, helping to encourage the efficient collection and segregation of recyclable waste.



The units provide a variety of siting options, including siting back-to-back, in a row or as a bank of four.



## Specifications

### Design Features

- Sack Retention System.
- Removable Door.
- Key-lock (Confidential Paper Unit Only).
- Non marking Durapol<sup>®</sup>\*\* feet.
- Standard or Recycle Now Graphic Options.

### Optional Extras

- Key-lock (for Paper, Bottle, Can and Non Recyclables Units) (Locks can be retro-fitted).
- Post Mounted Sign Kit.
- Wall Mounting Sign Kit.
- A4 Moulded Portrait Sign Kit.
- Rear Pod.
- General Waste Flap.
- Connector Kit.
- Castors.
- Clear plastic sacks, size: 406mm (16") diameter x 990mm.
- Nexus 50 Cup Bank model available.

### Dimensions

Width:	295mm	Capacity:	50ltr
Depth:	510mm	Weight:	4.2kg
Height:	680mm		

### Materials

Bin Body and Door: Duratec<sup>™</sup> material (contains 50% recycled material)

Sack Retention System: Durapol

BS 8470:2006  
Support your waste management contractor's compliance with BS 8470:2006 - Code of Practice for the Secure Destruction of Confidential Material.  
"Confidential material to be collected should remain protected from unauthorised access from the point of collection to complete destruction."

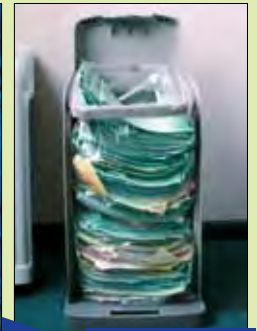
## Holds 18kg of Waste Paper

The compact units have a deceptively large 50 litre capacity. The confidential and paper units have an aperture which conceals the contents and allows paper to be stacked as it is placed in the bin. This enables the bin to hold up to 18kg of waste paper!

The rectangular shape of the bin and sloped aperture allows over 3000 sheets of paper to fit neatly into Nexus 50.



NOT Like This



Neatly Like This

## Easy to Empty, Easy to Clean

Nexus 50 has a front-opening, removable door. This allows easy access to the contents and reduces manual handling problems during emptying as minimal lifting is required. The unit is fitted with a neat sack retention system, which accepts various sizes of sack from 14" to 18" diameter (356mm to 458mm diameter), to cater for different requirements.

Manufactured from self-coloured Duratec<sup>™</sup>\*\* material. The smooth interior and exterior contours allow easy cleaning and add to the attractive, modern appearance of Nexus 50.



# Nexus<sup>®</sup> 50 Recycling Bin Colour, Aperture & Graphic Options

Colour-coded apertures and clear graphics make the units easily identifiable and easy to use. If you require other colour/aperture combinations than those illustrated below, please contact our sales office on: 01253 600410.

## Select your choice of colour and aperture

### Paper Apertures



Pastel Green Pastel Blue

### Cans & Bottles Apertures



Red Orange Yellow Dark Grey

### Open Top



Pastel Green Pastel Blue Red Orange Yellow Black Dark Grey Lime Green† Brown (Cup Bank Only)

## Select from Standard Graphic Options



## Recycle Now Graphic Options are also available in these colours



Grey Blue Red Blue Black Lime Green†



## General Waste Flap

A General Waste Flap is available as an optional extra, to hide any unsightly waste and help contain any odours from within the bin. (Only available in Grey)

## Optional Extras

### Rear Pods and Cup Bank

Rear Pods and Cup Bank are available for the Nexus 50. This can be either an 8ltr reservoir for the collection of waste liquids from cans or bottles before depositing in the unit, or an additional 8ltr recycling bin for items such as bottle tops or any other small items.

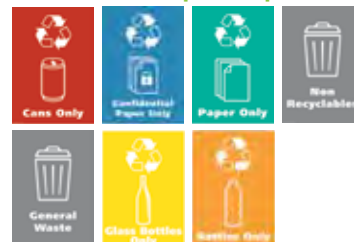
For Rear Pod graphics and colour options please see Nexus 100 side pod information on page 7.



### Sign Kits

Three sign kit options are available for the Nexus 50 – a post mounted sign, a new A4 moulded portrait sign, which both attach to Nexus 50 and a wall mounting sign. The sign kits help create a clearly identifiable recycling point in any location, as well as providing an easy and effective way of personalising the product. Sign designs can be specified at point of order.

### Standard Graphic Options for Sign Kits



### Recycle Now Graphic Options for Sign Kits



†Mixed Recyclables (Lime Green or Orange).

